



Cutting | Bending | Welding | Automation



TS

❖ High-speed Tube Laser Cutting Machine ❖

Company Culture



MISSION

Intelligent manufacturing changes future



VALUES

Customer-focused and employee-based



VISION

Become a respectable enterprise in the global metal forming equipment field

Company Profile



13

Global Branches



100+

Countries Covered



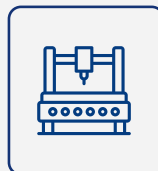
4

Manufacturing Bases



30+

Global Service Outlets



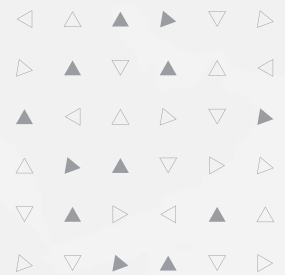
8,000+

Delivery Capability



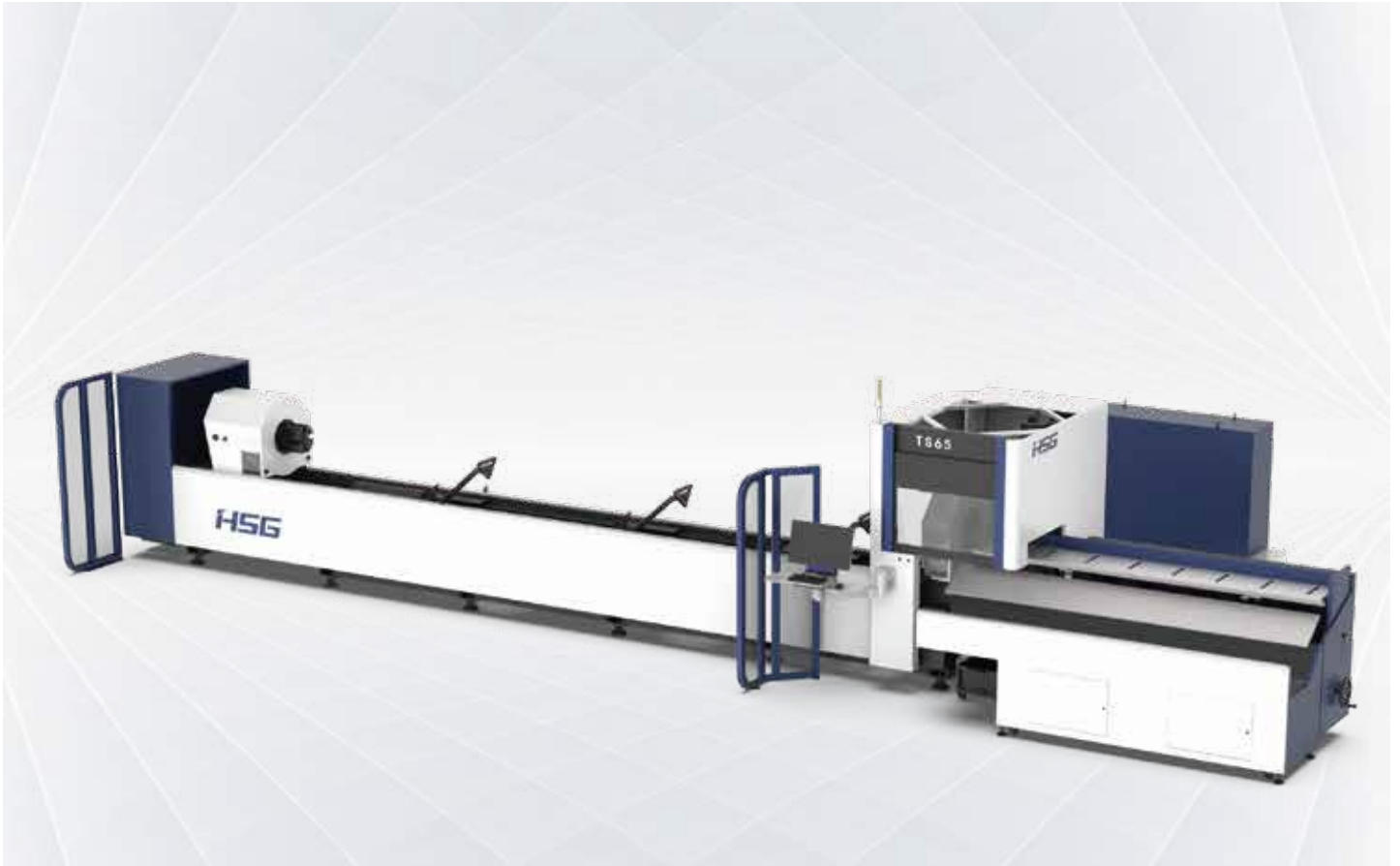
96,000m²

Occupied Area



TS 3000-6000W

High-speed Tube Laser Cutting Machine



Technical Parameters

Technical Parameter	TS65
Power	3000-6000W
Rotating Speed of Chucks	120r/min
No-load Speed	120m/min
Acceleration	1.2G
X/Y-axis Positioning Accuracy	±0.03mm/m
X/Y-axis Repositioning Accuracy	±0.03mm
*Tailing Length	Tailings in Double-chuck Clamping Model ≥ 150mm
Cutting Capacity	Round tube Φ12 - Φ273mm Square tube □12*12 - □200*200 Rectangular diagonal ≤ 273mm
Weight of Single Tube	200kg
Overall Dimensions(L*W*H) with Loading Racks	12500×4700×2600mm
Safety Certification	TUV CE

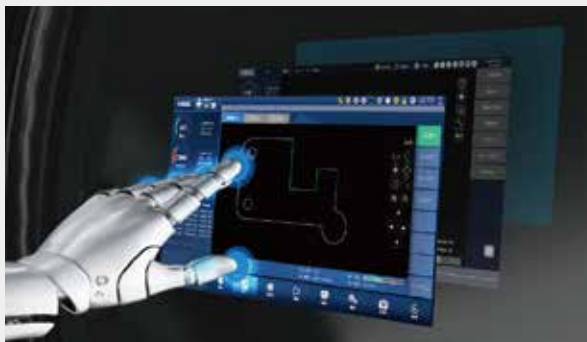
*Single chuck clamping can be achieved, in the case of reasonable nesting material.

* Machine appearance, technical parameters, function description, data comparison shown in this page are from HSG in-house laboratory. All testing results and experimental data shall be subject to real machine.



High Speed and Intelligent for Better Processing

- High Speed and Precise
High-speed data transmission without time delay and strong positional energy control.
- High rotational Speed and Air Velocity
Bus system and servo motor reduce unproductive time.



X9000 Bus-based Tube Cutting Control System

- Simple Interface
Clear interface is convenient for users operating and shows cutting data in real time to save time and costs.
- Functional Integration Control
A number of core functions are showed centrally on the interface to reduce operating steps and users can easily learn to operate.



Tube Clamping Technology

- HSG digital chucks can detect claws clamping status and tube sizes to achieve self adaptive adjustment of clamping force.





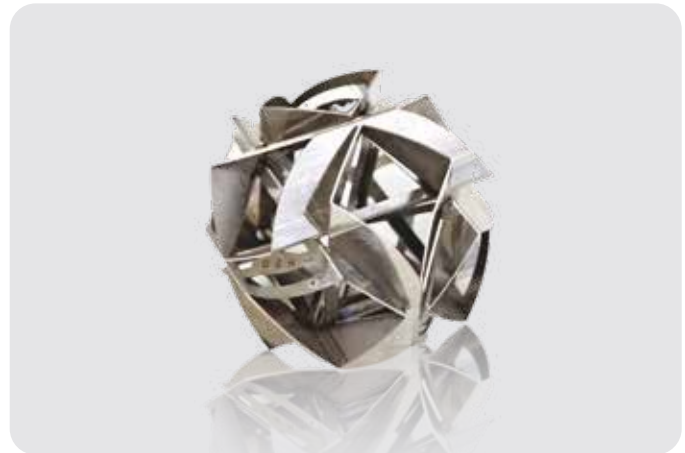
Powerful Functions Make You Never Spend Time Worrying

- Component Real-time Monitoring and Maintenance Alert
All components are detected in real time to ensure the stable use and the system is equipped with maintenance alert for careful component management.



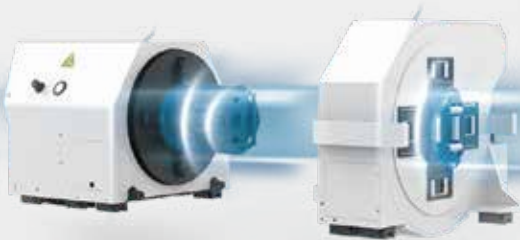
Tube Splicing Technology

- The operating control offers 50+ kinds of tube splicing patterns, for convenience of subsequent welding, such as splicing of male and female head of square tube, 90° arc splicing, splicing of round tube tee, splicing of cut-through holes, 45° splicing of hexagon , splicing of angle iron and channel steel, etc.

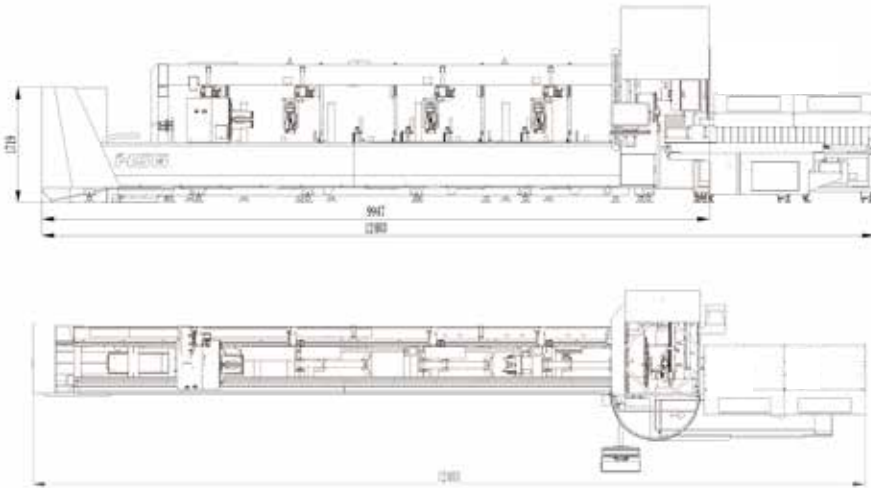


Cut Tubes at High Speed

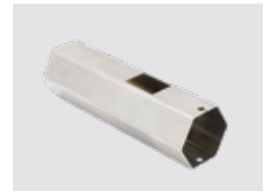
- The chucks rotate and move at the speed of 120r/min and 120m/min respectively. With that, users will enjoy fast cutting, stable service and high production.



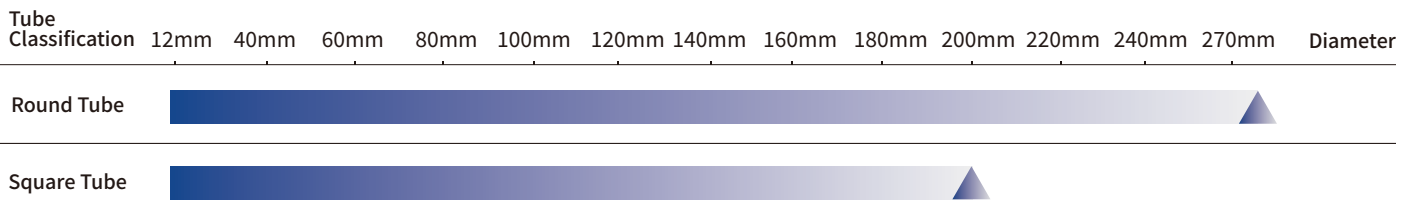
Machine Foundation *The marked size has about 10mm error



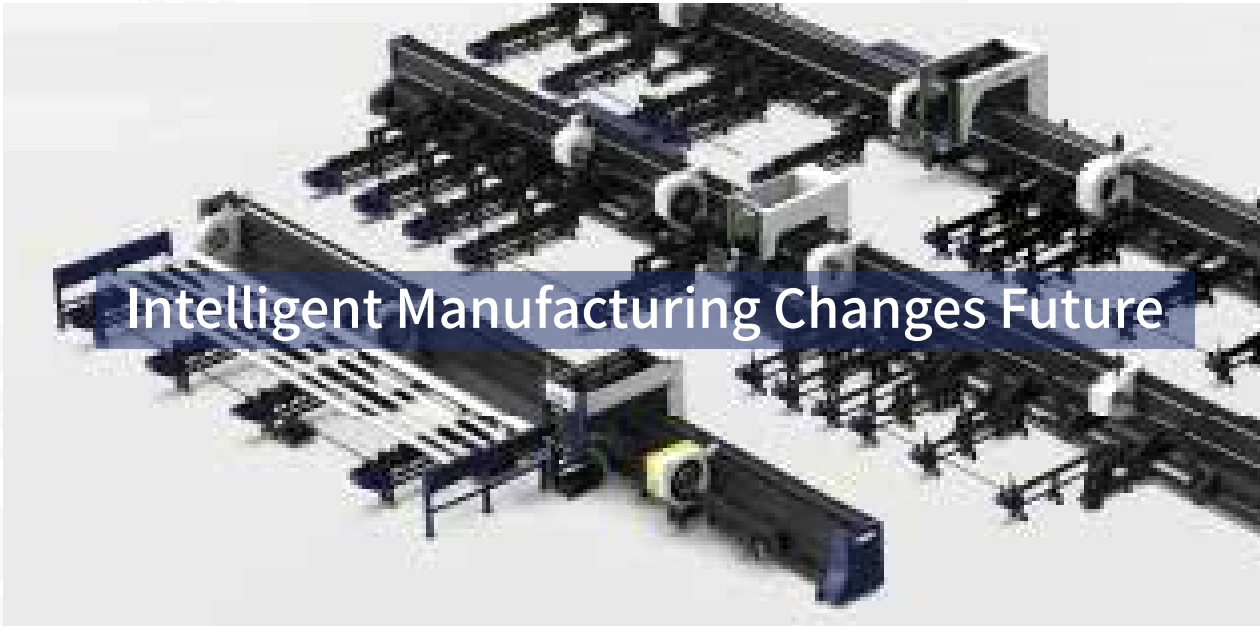
Cutting Samples



Cutting Capacity



The actual machines shall prevail and above data & pictures are only for reference.



Intelligent Manufacturing Changes Future



As a global enterprise, HSG sticks to providing professional and convenient service support to customers at home and board



Professional Training

Multiple technical training service and free operation training for customers and dealers in time



Efficient Support

Humanistic service model, online services and 7*24 hotline to offer solutions and assistance



Optimized Transport

Multi-channel transport solutions and professional transport solution team will provide various transport cases for to satisfy the demand of customers and save transports fees



Sufficient Accessories

Highly efficient accessories delivery service, multiple network inventory jointly responds to accessories demand to shorten customer's waiting times and accelerate production



Careful Services

Domestic door-to-door service and free proofing, global 100+dealers provide efficient and convenient services



Intelligent Manufacturing Changes Future



Website



Facebook



Youtube

Headquarters Add.: No. 4, Anye Road, Shunjiang Community Industrial Park,
Beijiao Town, Shunde District, Foshan, Guangdong, China
Website: www.hsglaser.com
Email: info@hsglaser.com
Tel: +86 757-66833906