



Cutting | Bending | Welding | Automation



# GX

❑ Double Exchange Platforms Laser Cutting Machine ❑

## Company Culture

### MISSION

Intelligent manufacturing changes future

### VALUES

Customer-focused and employee-based

### VISION

Become a respectable enterprise in the global metal forming equipment field

## Company Profile



**13**

Global Branches



**100+**

Countries Covered



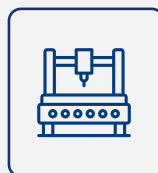
**4**

Manufacturing Bases



**30+**

Global Service Outlets



**8,000+**

Delivery Capability



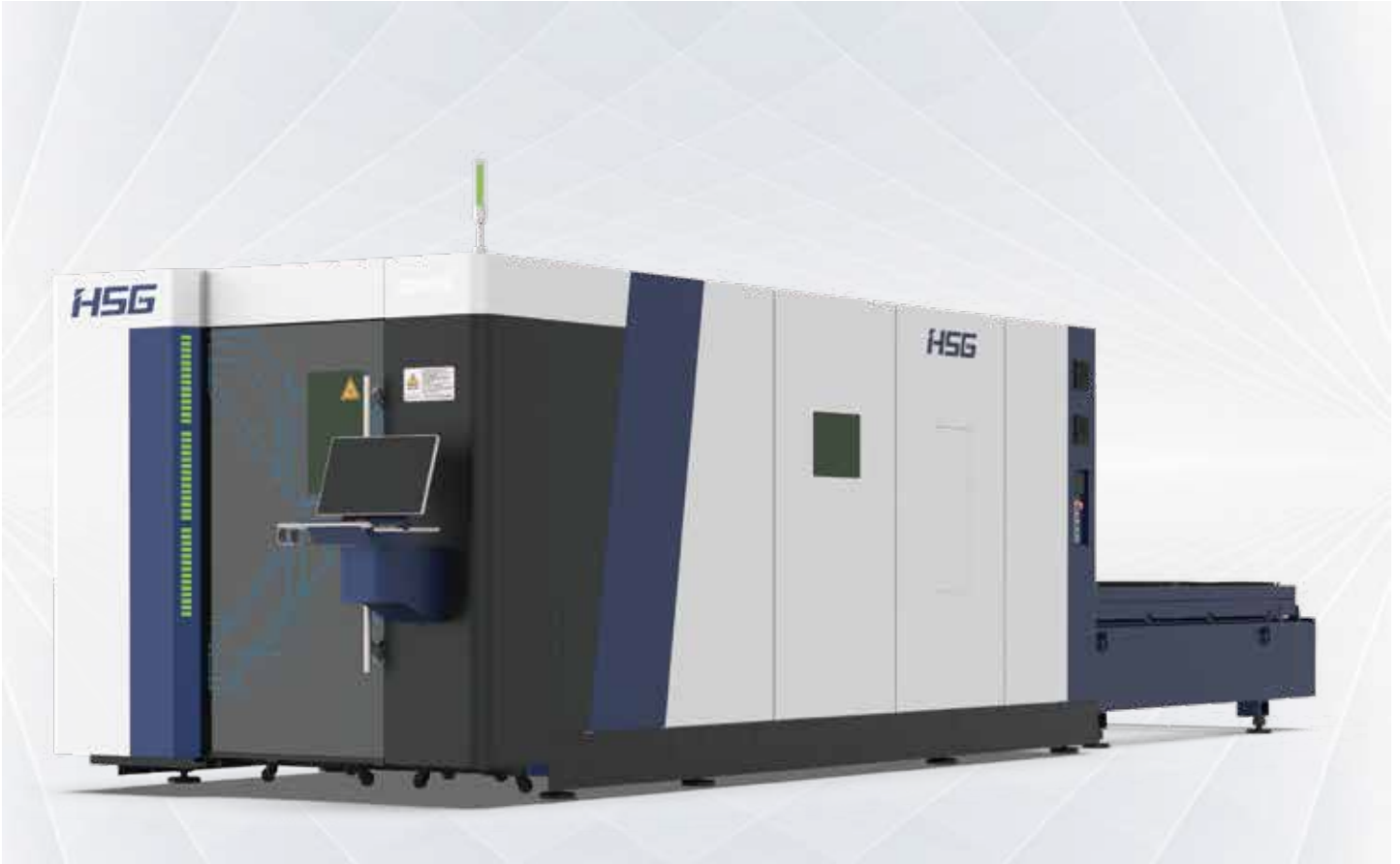
**96,000m<sup>2</sup>**

Occupied Area



# GX 3000-30000W

## Double Exchange Platforms Laser Cutting Machine



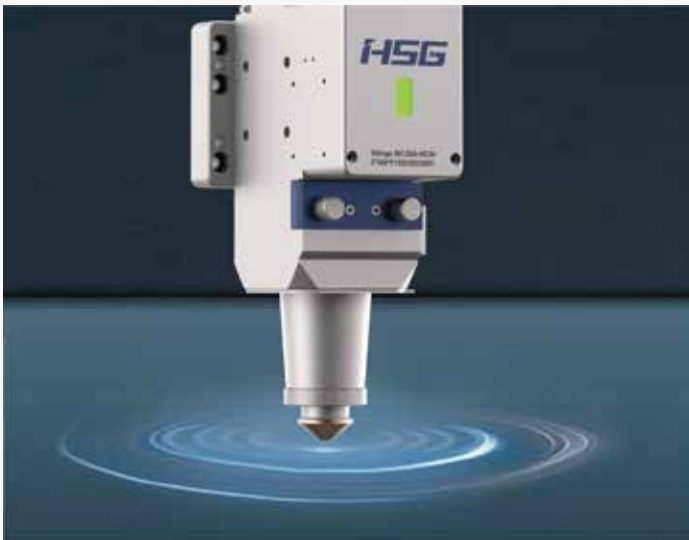
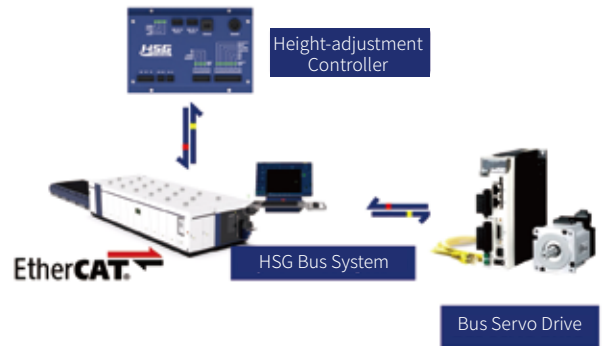
### Technical Parameters

Technical Parameters	G3015X	G4020X	G6025X	G12025X
Power	3000W-20000W	3000W-20000W	3000W-20000W	12000W-30000W
Processing format (L*W)	3048mm×1524mm	4064×2040mm	6096×2540mm	12500×2540mm
X/Y-axis positioning accuracy	±0.03mm/m	±0.03mm/m	±0.03mm/m	±0.03mm/m
X/Y-axis repositioning accuracy	±0.03mm	±0.03mm	±0.03mm	±0.03mm
No-load speed	140m/min	140m/min	120m/min	120m/min
Acceleration	1.5G	1.5G	1.5G	1.5G

\* Machine appearance, technical parameters, function description, data comparison shown in this page are from HSG in-house laboratory. All testing results and experimental data shall be subject to real machine.

## HSG Bus-based Control System

- EtherCAT bus high-speed response with strong anti-interference capability and simple electrical maintenance.
- Support absolute value and continue in outage and at the break-point for convenient remote diagnosis and servo adjustment.
- Automatic management of machine maintenance, core components are monitored in real time for easy and maintenance reminded on a regular basis.



## Follow-up Response Technology

- High sensitivity detection of striker plate.
- High speed follow of vibrating sheet.
- Automatic obstacle avoidance.

## Fully Functional Processing Technology

- High-speed microjoining, nano microjoining, counterbore technology and non-inductive perforation.
- Manual, automatic tracing-edge and anti-collision beam.
- Leftover bits and pieces cutting, coaxial visual sensing and automatic replacing nozzle.
- Common side cutting to reduce leftover bits and pieces and save energy.



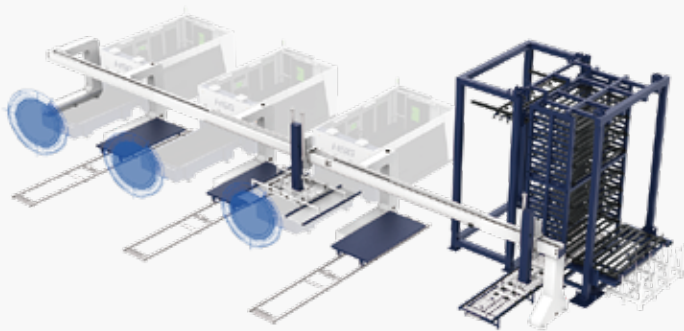


## Professional Nesting Software with Standard Configuration

- High nesting utilization ratio as famous nesting software.
- Simple operation with drawing function and support manual and automatic nesting.
- Support different materials and thicknesses categorized typesetting.
- Excel batch import.

## Support Graphics and G Code Software

- By code conversion software, Alpha T can support other brand equipment for super high compatibility.

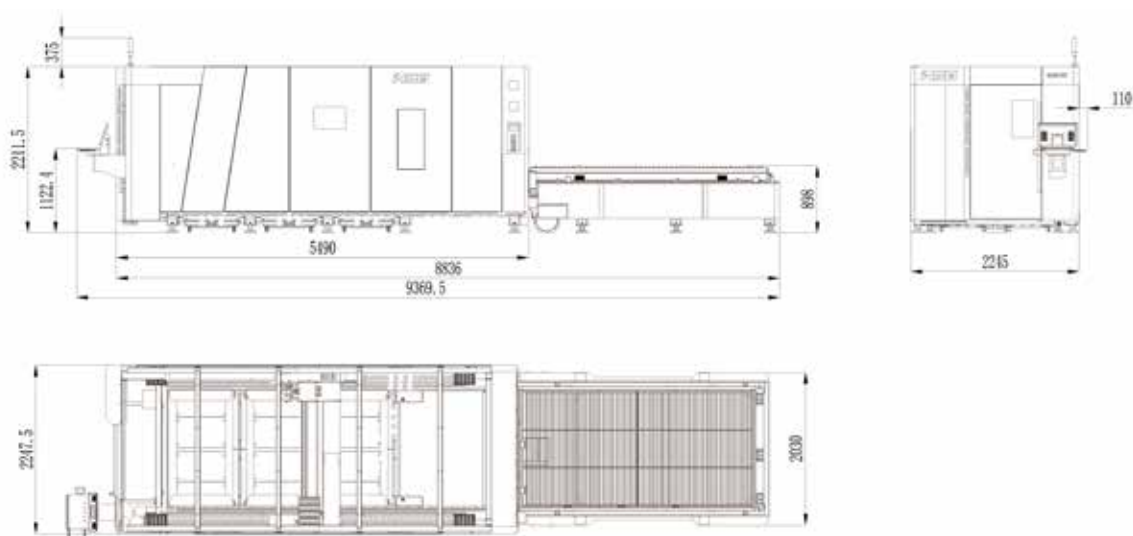


## Smart Factory and Standard Central Control System Interface Intelligent management

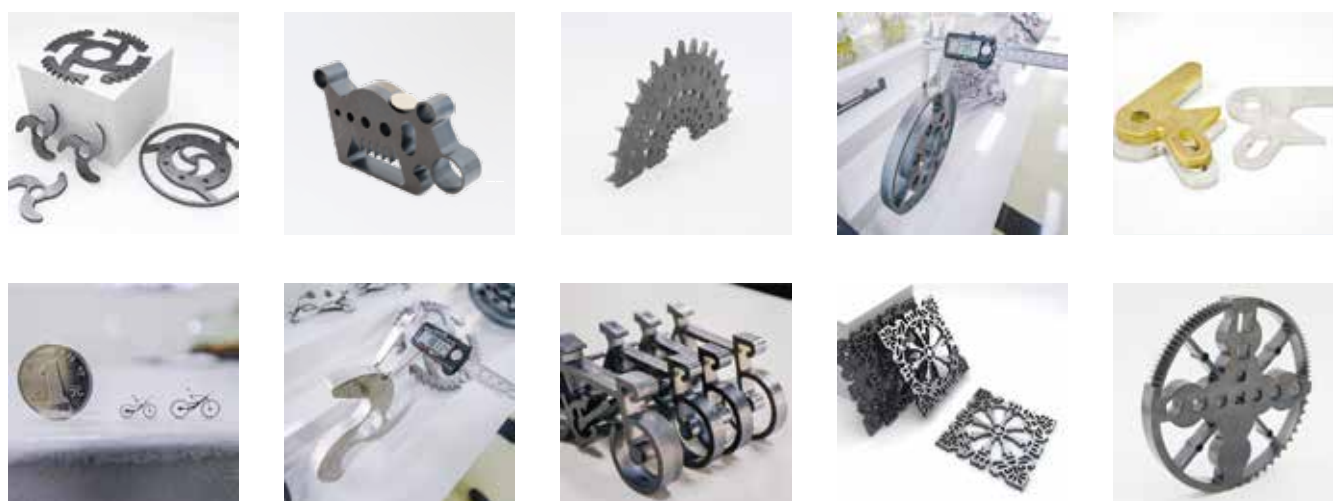
- Integrate with material tower and automatic loading and unloading equipment to create automatic production lines.
- Intelligent system to form production report by one click.



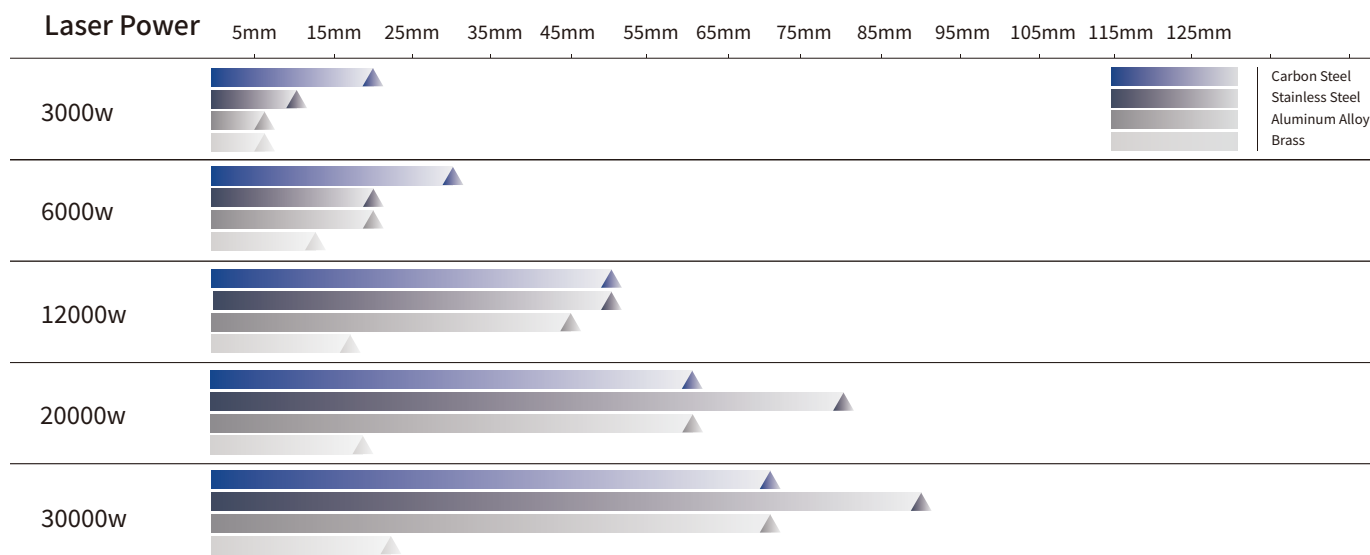
## Machine Foundation \*The marked size has about 10mm error



## Cutting Samples



## Cutting Capacity



The actual machines shall prevail and above data & pictures are only for reference.



## Intelligent Manufacturing Changes Future



**As a global enterprise, HSG sticks to providing professional and convenient service support to customers at home and board**



### Professional Training

Multiple technical training service and free operation training for customers and dealers in time



### Efficient Support

Humanistic service model, online services and 7\*24 hotline to offer solutions and assistance



### Optimized Transport

Multi-channel transport solutions and professional transport solution team will provide various transport cases for to satisfy the demand of customers and save transports fees



### Sufficient Accessories

Highly efficient accessories delivery service, multiple network inventory jointly responds to accessories demand to shorten customer's waiting times and accelerate production



### Careful Services

Domestic door-to-door service and free proofing, global 100+dealers provide efficient and convenient services



Intelligent Manufacturing Changes Future



Website



Facebook



Youtube

Headquarters Add.: No. 4, Anye Road, Shunjiang Community Industrial Park,  
Beijiao Town, Shunde District, Foshan, Guangdong, China  
Website: [www.hsglaser.com](http://www.hsglaser.com)  
Email: [info@hsglaser.com](mailto:info@hsglaser.com)  
Tel: +86 757-66833906