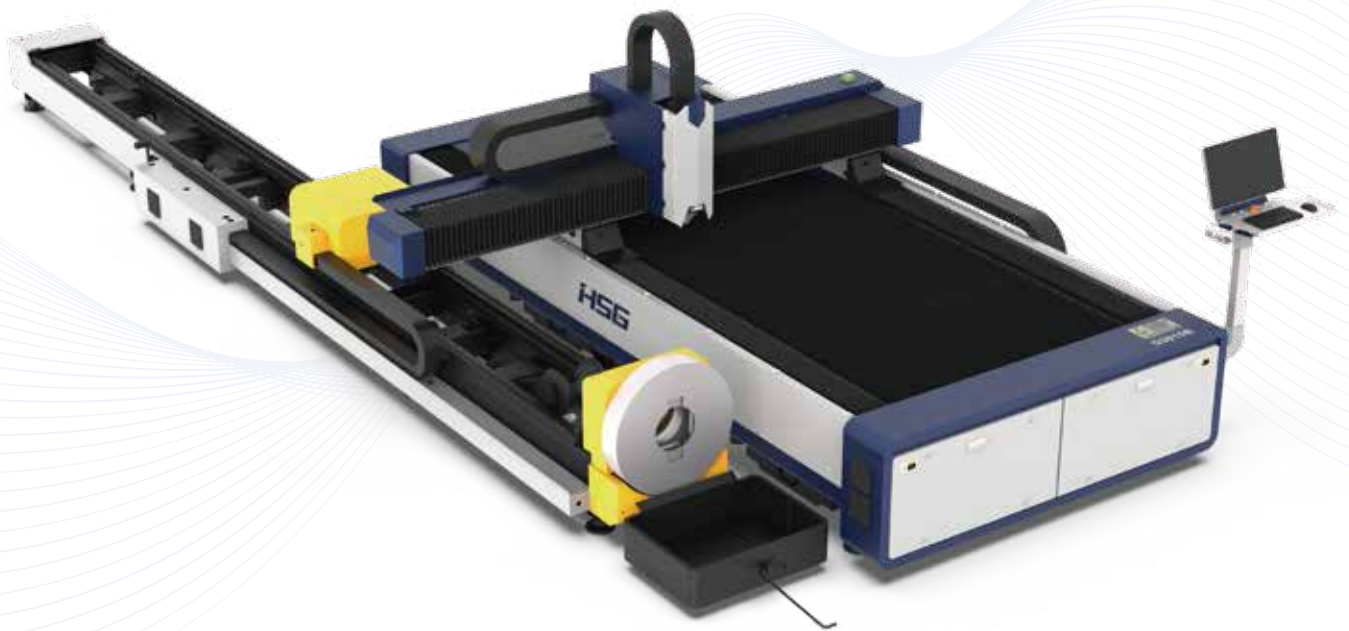




Cutting | Bending | Welding | Automation



# GB

❑ Single Platform Sheet & Tube Laser Cutting Machine ❑

## Company Culture



### MISSION

Intelligent manufacturing changes future



### VALUES

Customer-focused and employee-based



### VISION

Become a respectable enterprise in the global metal forming equipment field

## Company Profile



13

Global Branches



100+

Countries Covered



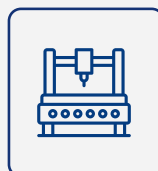
4

Manufacturing Bases



30+

Global Service Outlets



8,000+

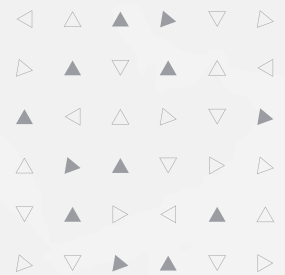
Delivery Capability



96000m<sup>2</sup>

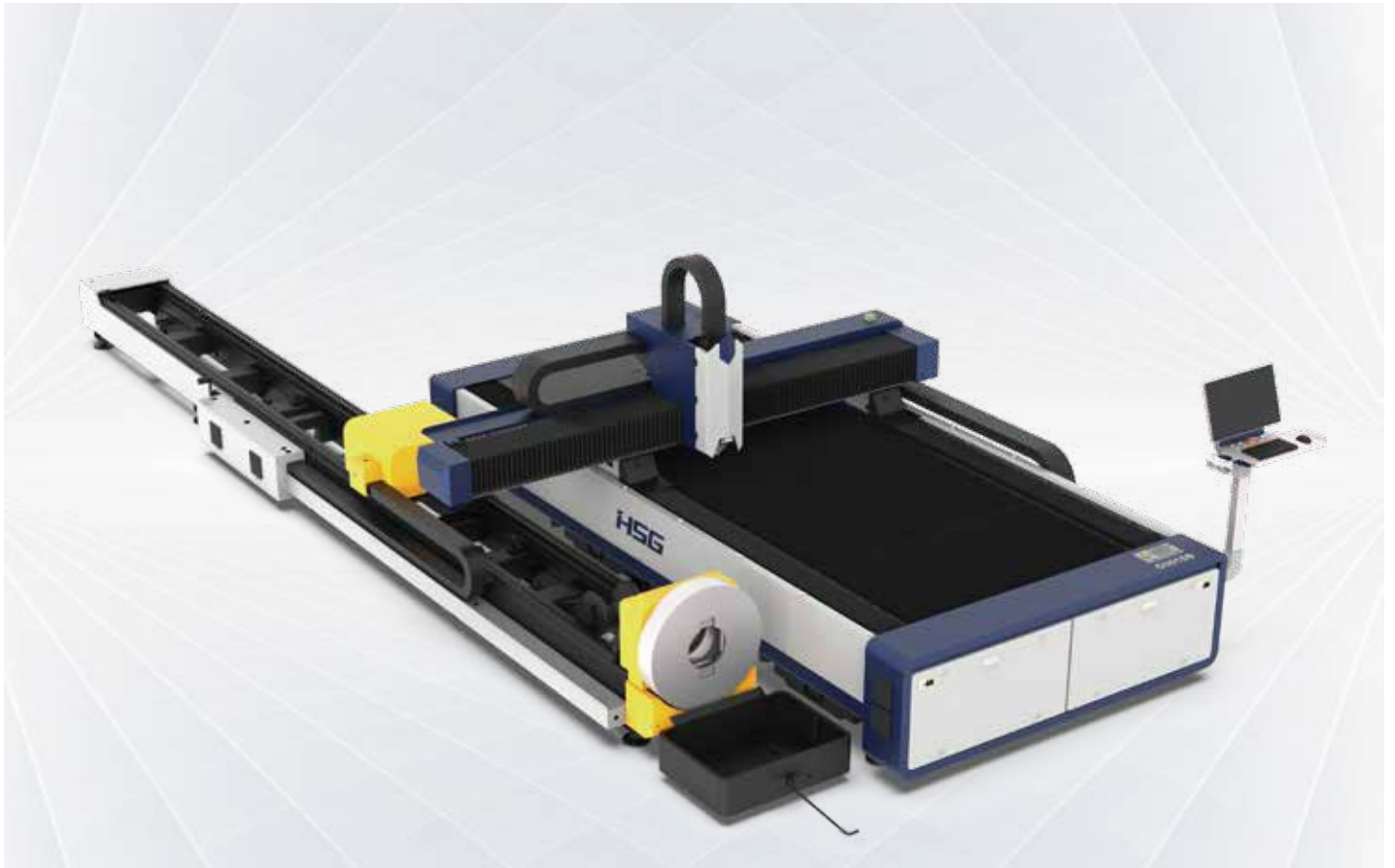
96,000m<sup>2</sup>

Occupied Area



# GB 1500-6000W

## Single Platform Sheet & Tube Laser Cutting Machine



### Technical Parameters

Technical Parameters	G3015B
Power	1500W-6000W
Processing format (L*W)	3000mm*1500mm
X/Y-axis positioning accuracy	$\pm 0.03\text{mm/m}$
X/Y-axis repositioning accuracy	$\pm 0.03\text{mm}$
No-load speed	60m/min
Acceleration	0.5G

\* Machine appearance, technical parameters, function description, data comparison shown in this page are from HSG in-house laboratory. All testing results and experimental data shall be subject to real machine.

## Alpha A Control System

- This system is easy to be operated and rich in functions.
- Even green hands can cut high-quality samples.
- Monitor core components in real time.
- Millisecond-level follow-up response technology.
- Click to create processing report.
- Compatible with codes of international brands.

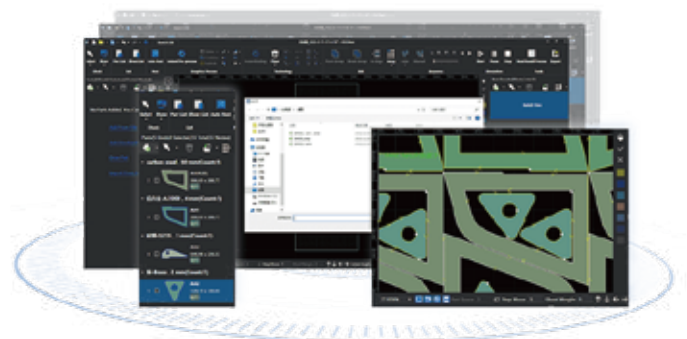


## Double Fully-automatic Pneumatic Chucks

- One-key clamping and automatic centering.
- Pneumatic clamping with no looseness or slip.
- Concave support frame can prevent tube from sagging and deformation.
- Clamp both round, square tube and profiles like channel and angle steel.

## Professional Nesting Software

- No matter sheet cutting or tube cutting, it is equipped with professional nesting software to optimize cutting track and improve efficiency.



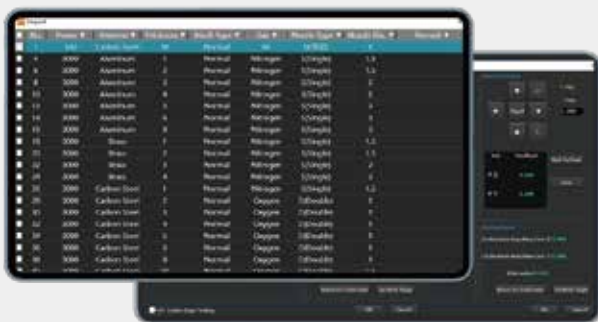
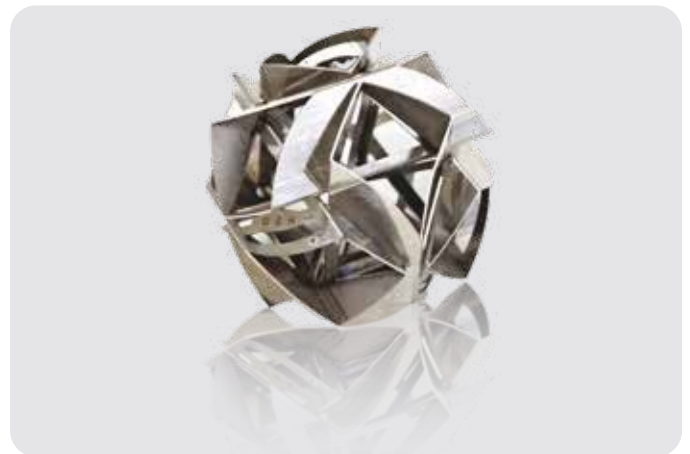


## Automatic Focus Cutting Head

- Autofocus Laser Cutting Head  
The cutting head can adjust its focus according to laser beam mode to make sure of mirror-like surface.
- Servo autofocus system
- Automatic cooling and obstacle avoidance
- Three built-in protective lens
- Anti-pollution design
- Give early warning if abnormal

## Tube Splicing Technology

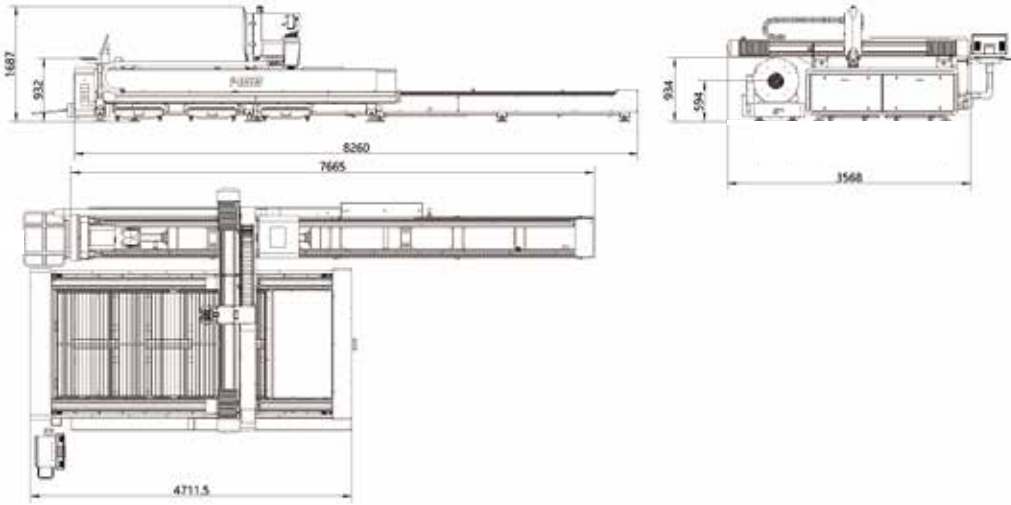
- The operating control offers 50+ kinds of tube splicing patterns, for convenience of subsequent welding, such as splicing of male and female head of square tube, 90° arc splicing, splicing of round tube tee, splicing of cut-through holes, 45° splicing of hexagon, splicing of angle iron and channel steel, etc.



## Massive Production Database

- Users can invoke cutting technology from the database when cutting sheet of different materials and thickness
- Have multiple thick sheet cutting technologies like air cutting, counterboring technology, perfect finish cut (PFC), lightning-fast piercing, etc

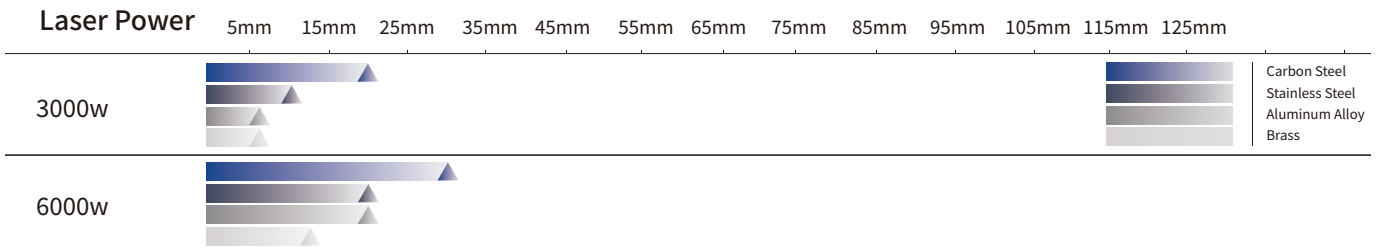
# Machine Foundation \*The marked size has about 10mm error



## Cutting Samples



## Cutting Capacity



The actual machines shall prevail and above data & pictures are only for reference.



## Intelligent Manufacturing Changes Future



**As a global enterprise, HSG sticks to providing professional and convenient service support to customers at home and board**



### Professional Training

Multiple technical training service and free operation training for customers and dealers in time



### Efficient Support

Humanistic service model, online services and 7\*24 hotline to offer solutions and assistance



### Optimized Transport

Multi-channel transport solutions and professional transport solution team will provide various transport cases for to satisfy the demand of customers and save transports fees



### Sufficient Accessories

Highly efficient accessories delivery service, multiple network inventory jointly responds to accessories demand to shorten customer's waiting times and accelerate production



### Careful Services

Domestic door-to-door service and free proofing, global 100+dealers provide efficient and convenient services



Intelligent Manufacturing Changes Future



Website



Facebook



Youtube

Headquarters Add.: No. 4, Anye Road, Shunjiang Community Industrial Park,  
Beijiao Town, Shunde District, Foshan, Guangdong, China  
Website: [www.hsglaser.com](http://www.hsglaser.com)  
Email: [info@hsglaser.com](mailto:info@hsglaser.com)  
Tel: +86 757-66833906